




Context Sensitive Solutions: Florida and the Southeast

R. Keith Moore
FHWA Resource Center
March 19, 2014



Florida Transportation Projects from the Past




Selected benefits of Context Sensitive Solutions

- reduce congestion
- enhance safety
- expand economic opportunity
- improve air quality
- increase the value of transportation assets

Livability is about tying the quality and location of transportation facilities to broader opportunities such as access to good jobs, affordable housing, quality schools, and safer streets and roads.

The livability principles are key outcomes of the CSS process.

- Provide more transportation choices,
- Promote equitable, affordable housing,
- Enhance economic competitiveness,
- Support existing communities,
- Coordinate policies and leverage investment, and,
- Value communities and neighborhoods.

A long, grey, arrow-shaped graphic pointing to the left, positioned horizontally across the top of the slide content area.

The FHWA supports livable communities through funding transportation related projects and sponsoring activities like Context Sensitive Solutions and public involvement that help, enable people to live closer to jobs, save households time and money, and reduce pollution.

Selected CSS and Livability Facts

- Both CSS and livability apply to transportation processes, outcomes, and decision making and are founded upon collaborative decision-making strategies that engage a full range of stakeholders early and continuously throughout the project planning and development process.
- Both helps meet community goals and national goals of environmental sustainability.

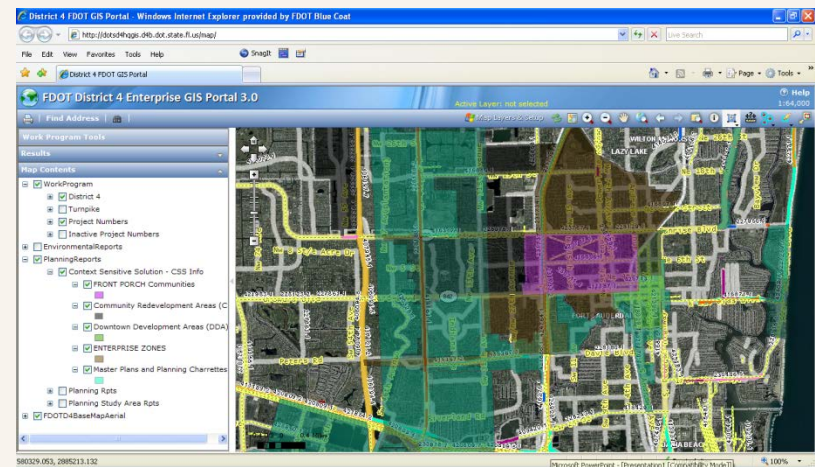
Selected CSS and Livability Facts

- Both lead to preserving and enhancing scenic, aesthetic, historic, community, and environmental resources, while improving or maintaining safety, mobility, and infrastructure conditions.
- Both can also improve the cost-effectiveness and streamline the delivery of Federal transportation programs.

I-95 Corridor, Miami To Ft. Lauderdale -This case study support livable communities by improving highway operations through a coordinated effort between the State DOT and local communities.



Livable Communities/CSS Geographic Information Systems Database - This project represents an interactive GIS database including known planning initiatives and special planning areas within Florida Department of Transportation.



Moving Forward

The Federal agencies are continuing the focus of CSS and livability and similar efforts in the name of good public involvement Including developing and promoting case studies, websites, teams, outreach tools, workshops, etc.



State/Local
Agencies

HEP-Headquarters




Resource
Center

CSS and Livability Communities

Overlapping Strategies, Tools, and Philosophies

- Flexibility
- Livability
- Community impact assessment
- Scenario planning
- Land use and transportation
- Smart growth
- Walkable communities
- Walkable thoroughfares
- Healthy neighborhoods
- Transit-oriented development (TOD)
- Complete Streets
- Context-Sensitive Solutions (CSS)

A Borrowed, yet update Quote



Transportation ~~is~~ will continue to be the Means,
CSS and Livability ~~are~~ will continue to be the
Process and Outcomes

CSS and Livability Resources can be found:

- www.fhwa.dot.gov/livability
- www.contextsensitivesolutions.org
- www.cssnationaldialog.org



Thank you

R. Keith Moore
FHWA Resource Center

